

All about the brand-new EAM Special Edition Pointoselect Digital

Dr. Adrian Larsen & Dr. Jeremy Steiner



The Story behind the EAM Special Edition Pointoselect Digital

- It all started with Facebook...
- And a webinar...
- And a friend's basement...



All He Wanted was... Everything

- Frequency Accuracy
- High (enough) voltage
- Quality
- Affordability



I Looked Into it...

- Correct Frequencies
- Frequency Accuracy
- High (enough) voltage
- Quality
- Affordability

Pick 2 (maybe 3)



You said what now?

- Correct Frequencies
- Frequency Accuracy
- High (enough) voltage
- Quality
- Affordability

Hmmm....





**Treat Body Points with
Needles & Powerful
Electroacupuncture**



**Detect and Treat Auricular Points
With Dual-polarity Location and
One-button Treatment**

Features

- Audio and visual body point and auricular point detection
- Positive and negative point detection
- Adjustable sound volume
- Adjustable point location sensitivity to eliminate false positives
- Adjustable treatment intensity (with visual indicator) for effective, comfortable stimulation
- Seven Nogier Treatment Frequencies: 2.3, 4.6, 9.1, 18.3, 36.5, 73, 146 Hz.
- Seven Bahr Treatment Frequencies: 2.3, 4.5, 9.4, 18.7, 37.5, 74.9, 149.9 Hz.
- Twelve Reiningier Treatment Frequencies: 6.44, 4.32, 3.68, 5.48, 3.88, 6.18, 5.21, 4.77, 4.14, 5.72, 4.55, 3.45 Hz.
- One-touch switching between preset frequencies
- Automatic power shut off when not in use
- FDA 510K Registered K123958

Technical Specs

- **Power Source:** 9V battery
- **Output Voltage:** 0-200V
- **Frequency Range:** 2-149.9 Hz
- **Pulse Width:** 60-120 μ s
- **Point Detection:** Bipolar, adjustable sensitivity
- **Treatment Polarity:** Positive and negative, set automatically

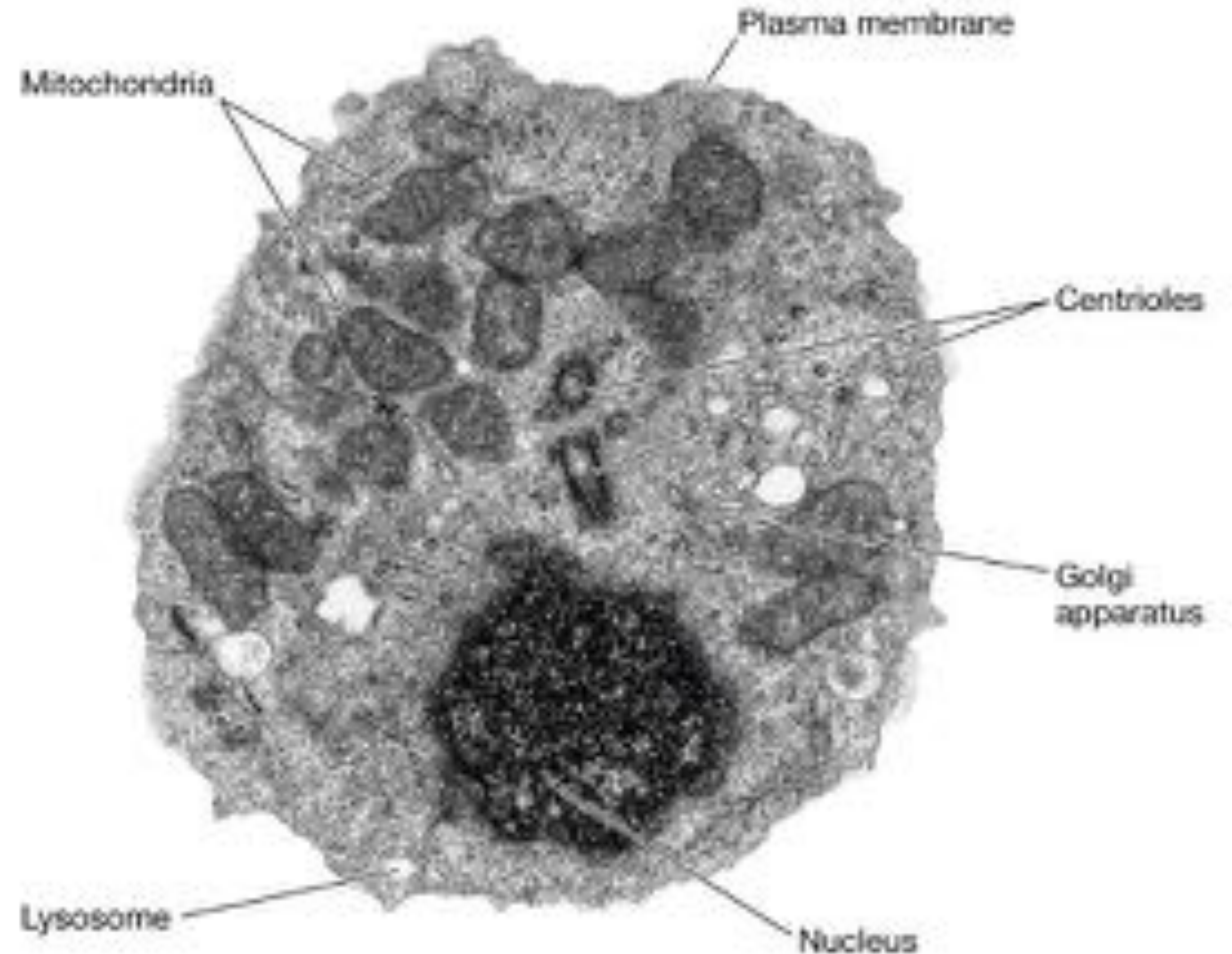


Why Electro-Acupuncture Medicine Is So Effective

**All Disease is a Lack
of Benevolent Qi**

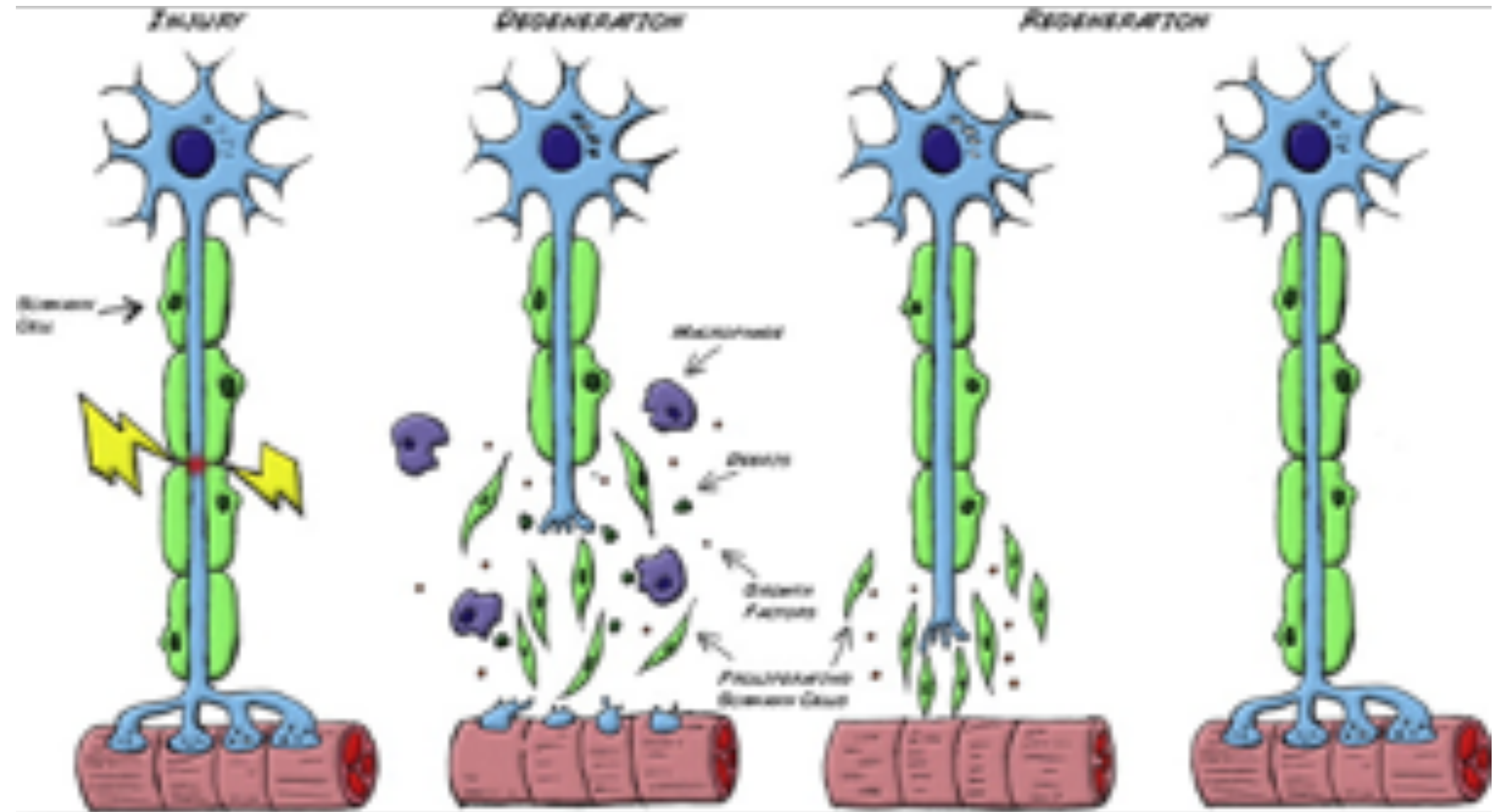
Why Electro-Acupuncture Medicine is so Effective

- Cells are constantly regenerating



Why Electro-Acupuncture Medicine is so Effective

- Disease occurs when cells fail to regenerate or function properly

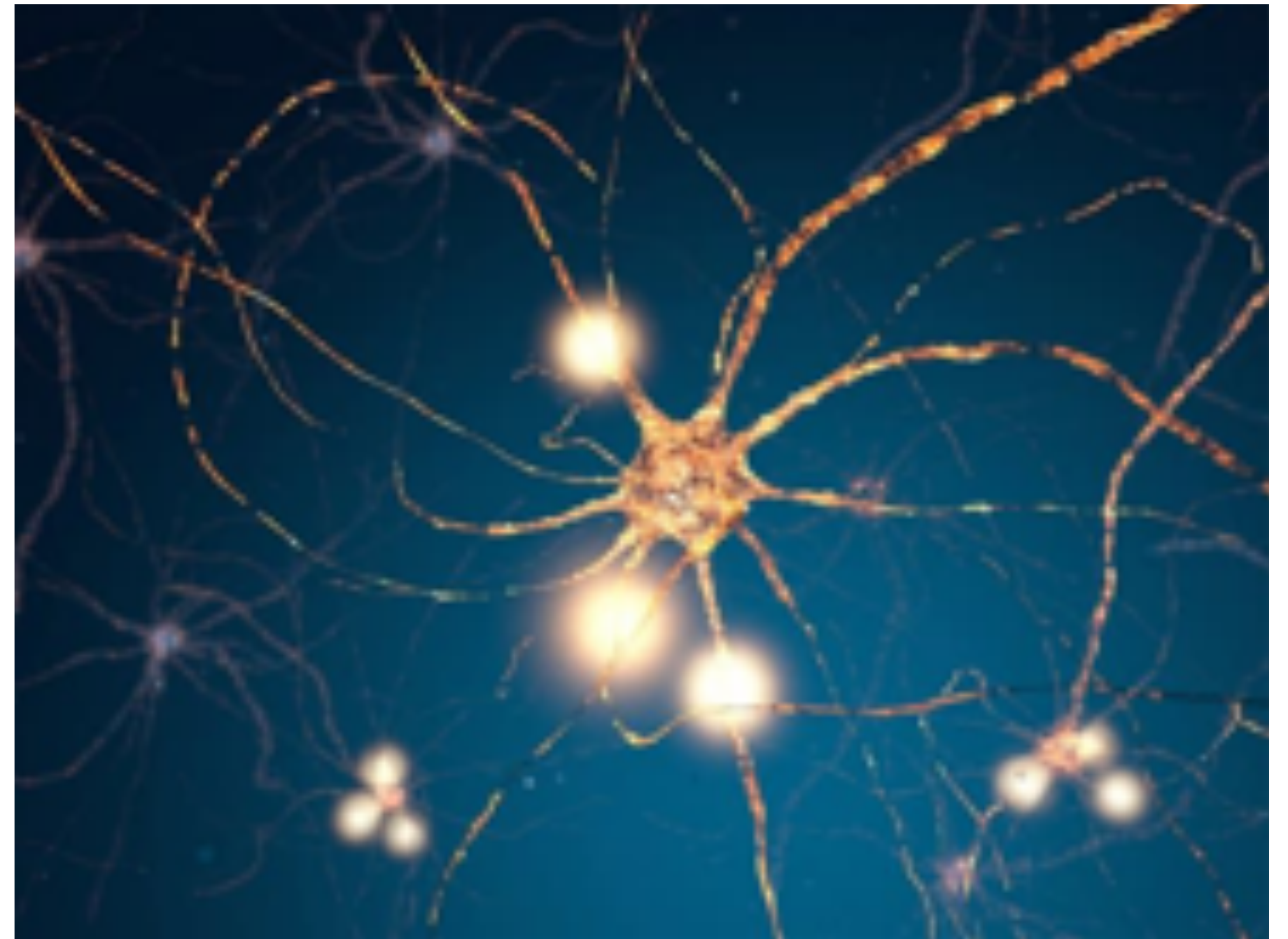


Why Electro-Acupuncture Medicine is so Effective

- Requirements for cellular regeneration & proper function

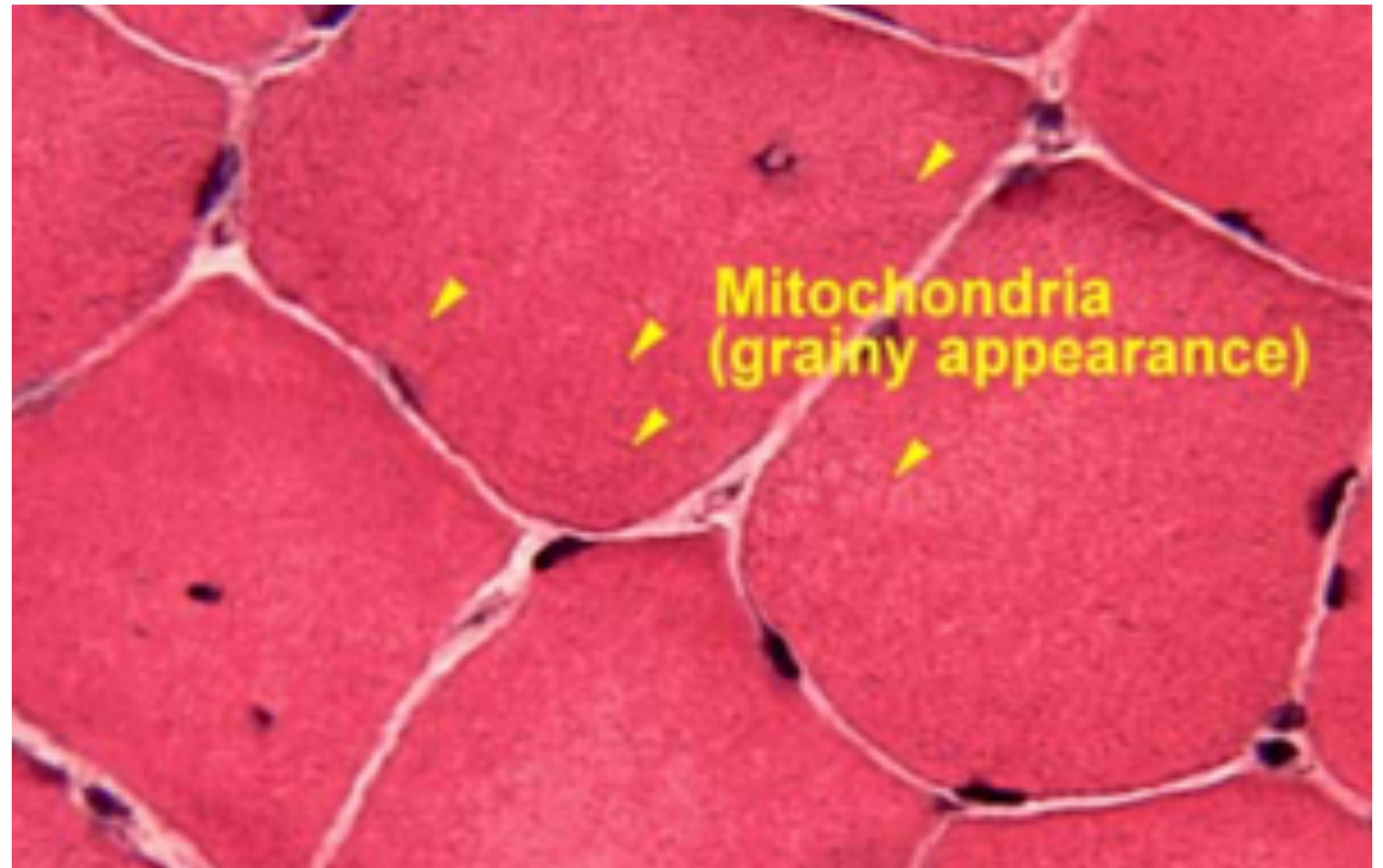
1. Electricity (E-Qi)
2. Gu Qi

**Modern Qi Formula =
(E-Qi + Gu Qi)**



Why Electro-Acupuncture Medicine is so Effective

- Muscle Tissue Functions as a Chi Generator and Battery



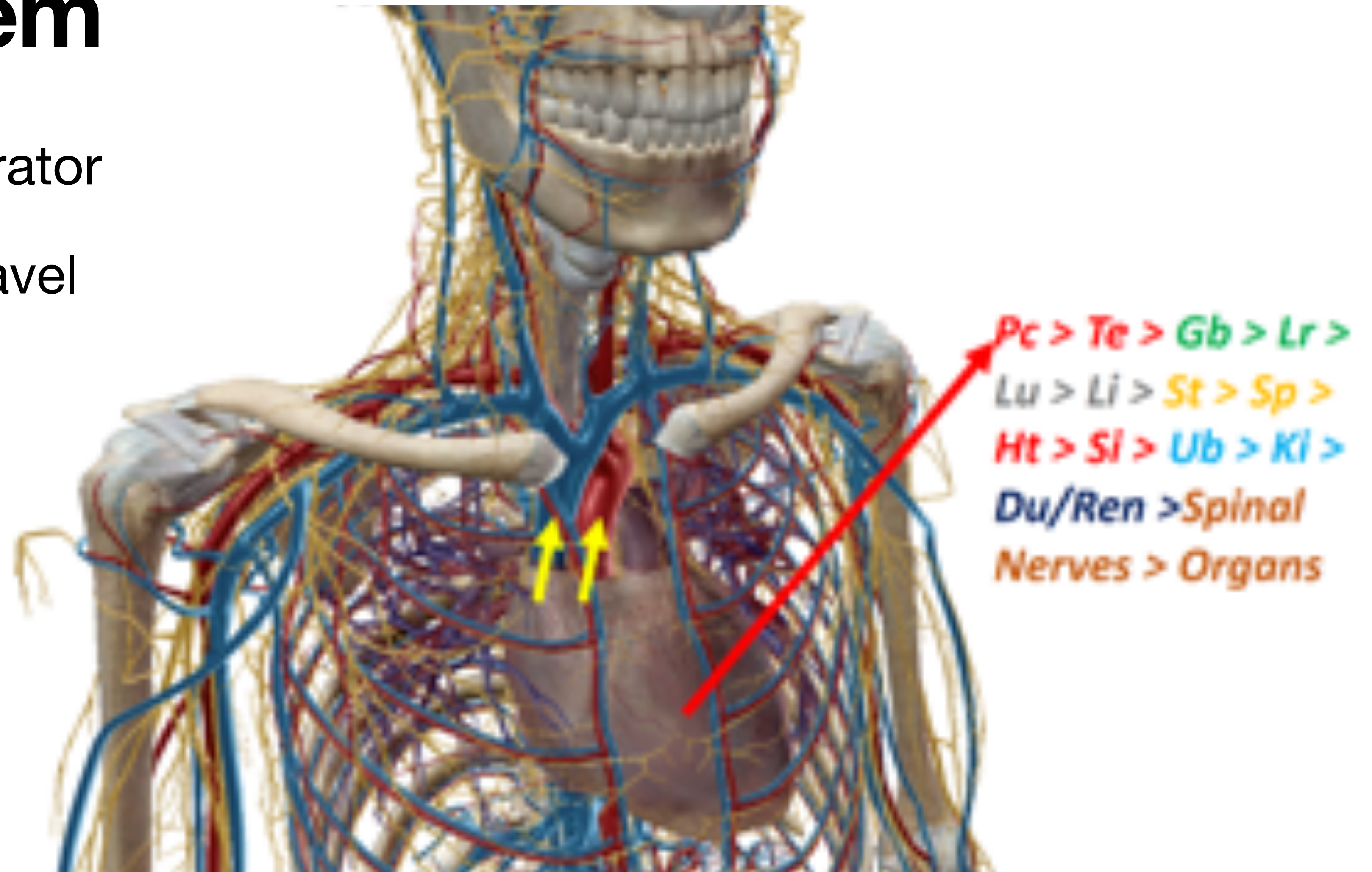
Why Electro-Acupuncture Medicine is so Effective

- Fascia surrounds skeletal muscle
- It's the most electrically conductive tissue in the body and serves as a pathway for Benevolent Chi to travel.



The Acupuncture Channel System

- The heart is a chi generator
- 4 pathways of chi to travel leaving the heart



How to use the EAM Special Edition Pointoselect Digital

EAM Special Edition Recommendations

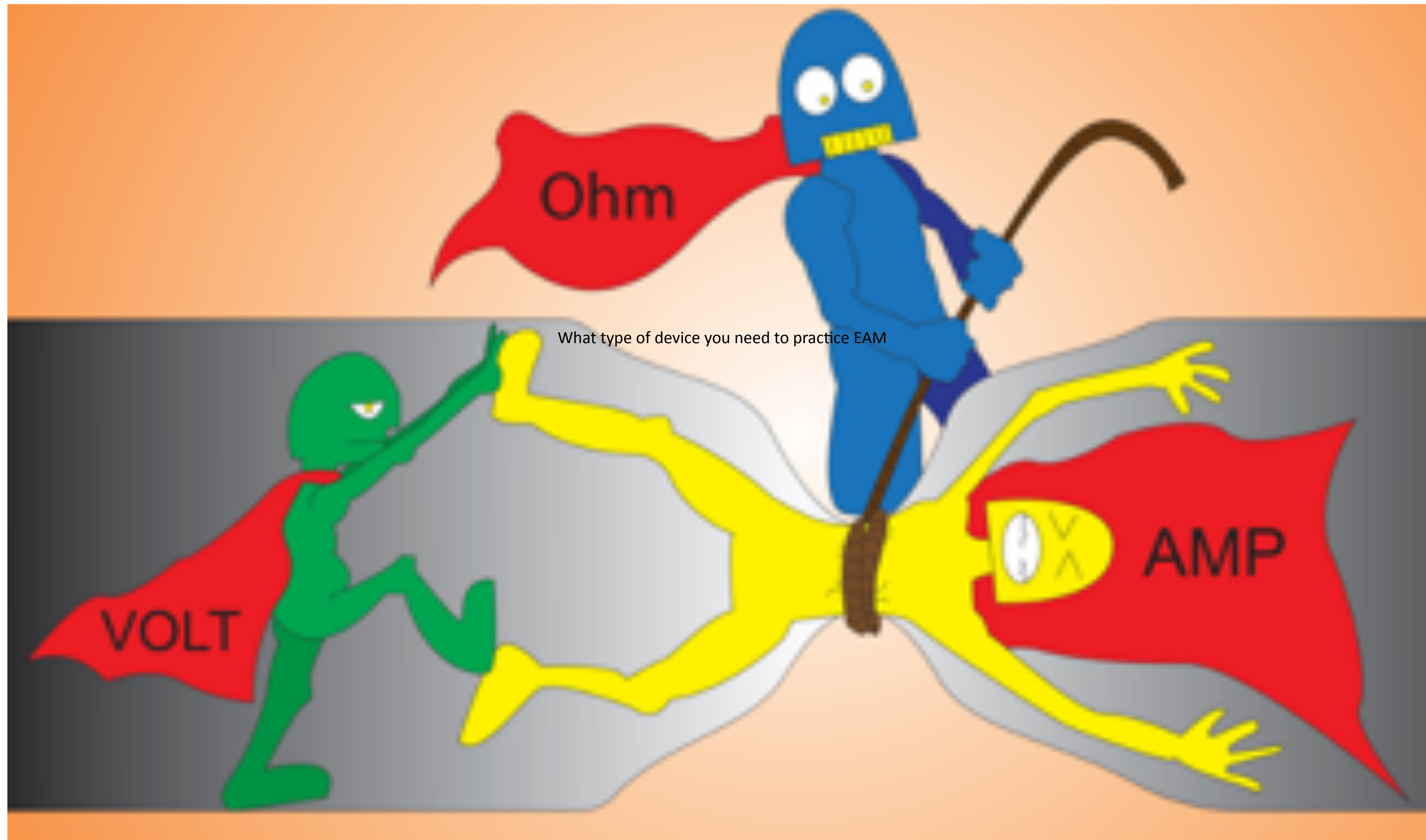
- Ear Mode vs. Body Mode
- Gold Only Setting (Looking for deficiency)
- Finding the point
- Grading the point
- Marking the point
- Treatment





Treatment Demo from Dr. Jeremy Steiner

Physics for Electro-Acupuncture Medicine Practitioners





RIGOL

DS1052E

DIGITAL OSCILLOSCOPE

2 Channel
100MHz 1GS/s



12VDC
OUT



Menu

Enter

Exit

VERTICAL

Input

CH1

CH2

MATH

REF

OFF

Auto

CH1

CH2

X

Y

Osteoarthritis



24.10.2014

2.12.2014

Osteoarthritis



24.10.2014

2.12.2014

Pertinent Data

- The body's total voltage can be estimated to be around 3.5 trillion volts! There are **50 trillion cells X .07volts = 3.5 trillion volts.**
- One study injected endotoxin into rats. The EA treated group survived while the untreated group died demonstrating EA's ability to drastically reduce harmful inflammatory cytokines.
- **Electroacupuncture can eliminate pain** by activating a variety of bioactive chemicals through peripheral, spinal, and supraspinal mechanisms.
- **Electroacupuncture can trigger the release of opioids**

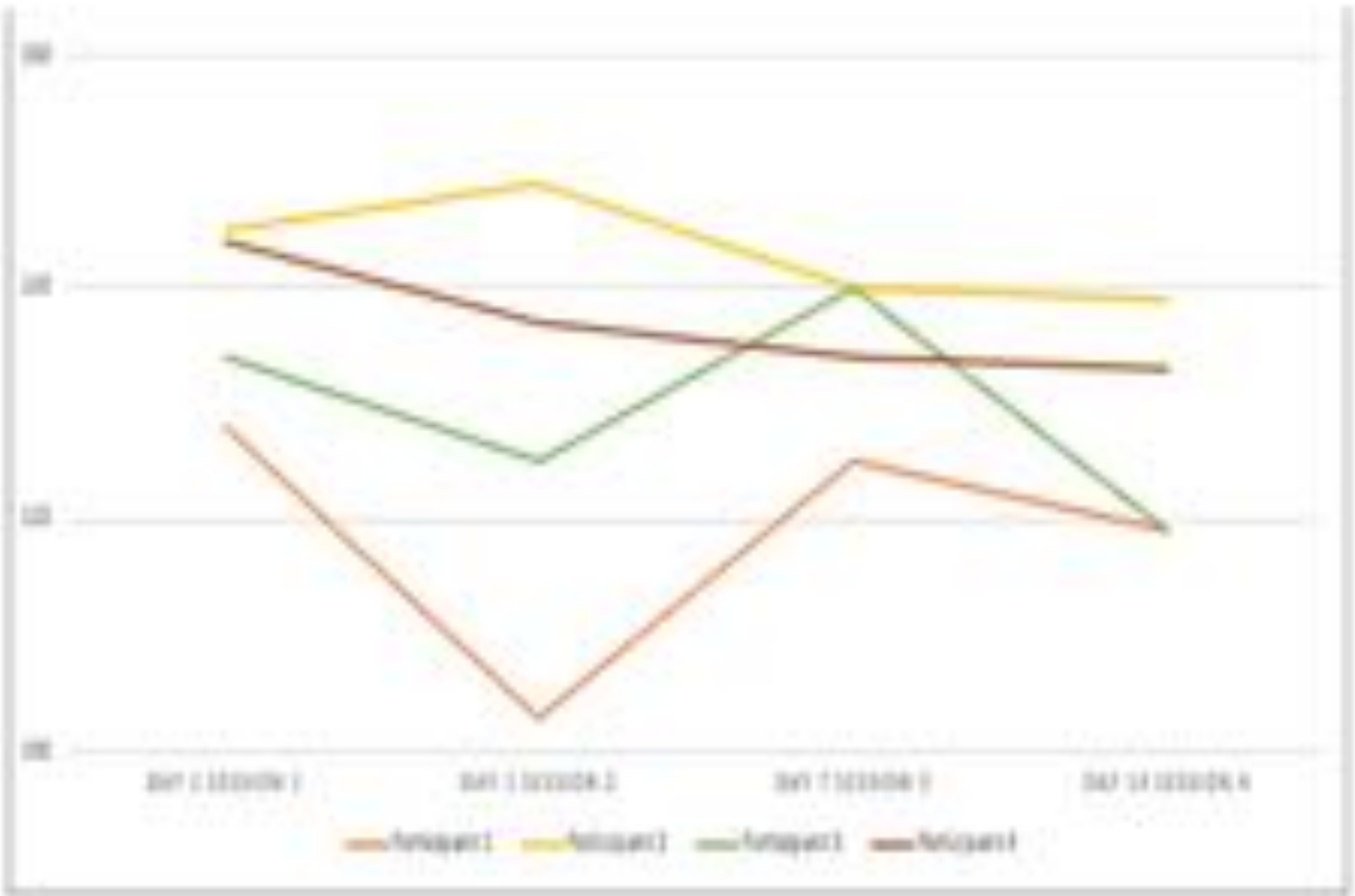
References

- 1. Bruce H. Lipton, PhD. 2021. What are the volts of electricity in your human body?! - Bruce H. Lipton, PhD. [online] Available at: <<https://www.brucelipton.com/what-are-the-volts-electricity-your-human-body/>> [Accessed 10 August 2021].
- 2. Torres-Rosas, R., Yehia, G., Peña, G., Mishra, P., del Rocio Thompson-Bonilla, M., Moreno-Eutimio, M. A., Arriaga-Pizano, L. A., Isibasi, A., & Ulloa, L. (2014). Dopamine mediates vagal modulation of the immune system by electroacupuncture. *Nature Medicine*, 20(3), 291–295. <https://doi.org/10.1038/nm.3479>
- 3. Electroacupuncture - PubMed - NCBI. (n.d.). Retrieved from <https://www.ncbi.nlm.nih.gov/pubmed/?term=electroacupuncture>
- 4. Maeda, Y., Kim, H., Kettner, N., Kim, J., Cina, S., Malatesta, C., ... Napadow, V. (2017, April 1). Rewiring the primary somatosensory cortex in carpal tunnel syndrome with acupuncture. Retrieved from <https://www.ncbi.nlm.nih.gov/pubmed/28334999>
- 5. Zhang, R., Lao, L., Ren, K., & Berman, B. M. (2014, February). Mechanisms of acupuncture-electroacupuncture on persistent pain. Retrieved from <https://www.ncbi.nlm.nih.gov/pmc/articles/PMC3947586/>

Graphical & Statistical Research Results

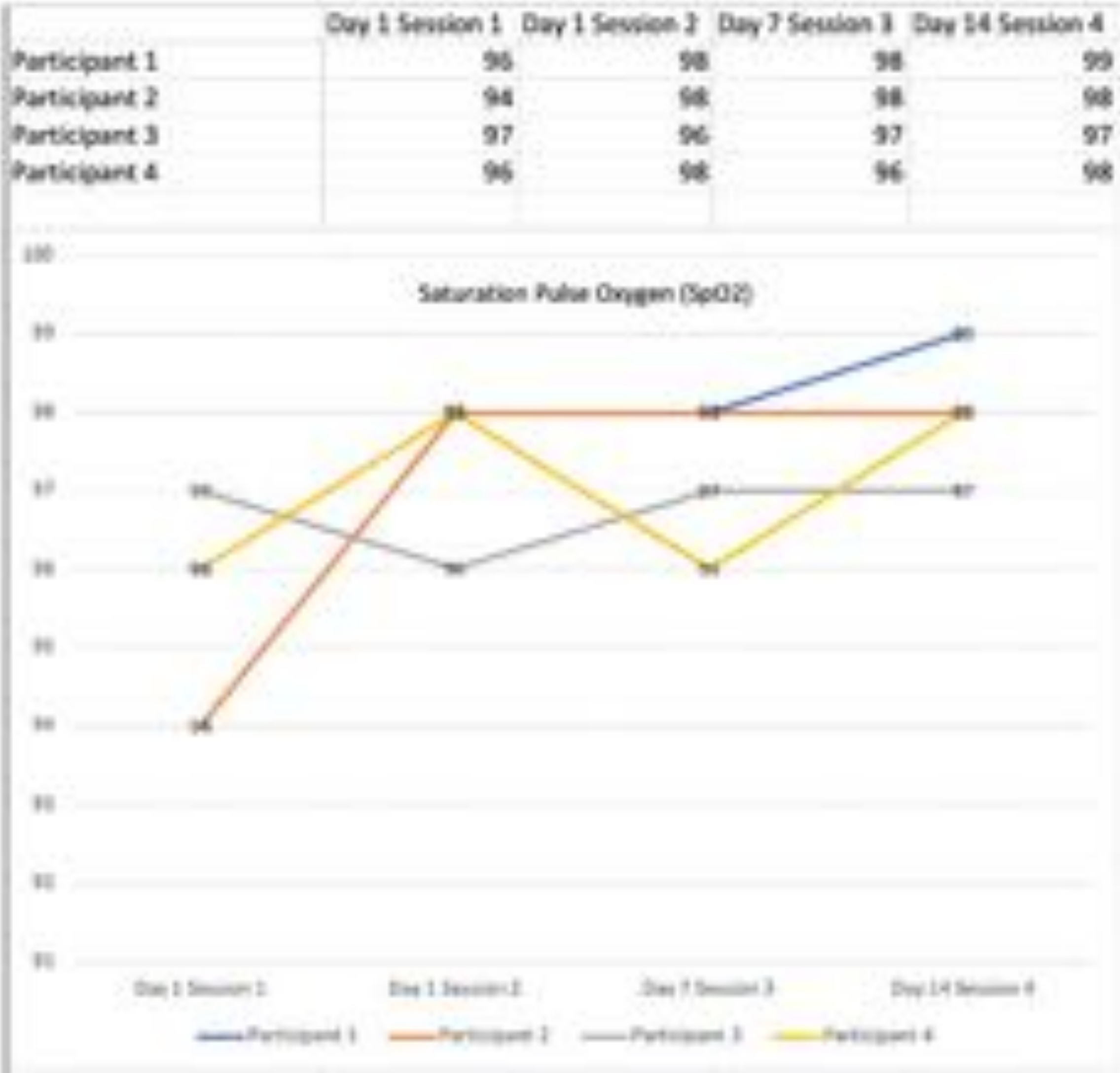
| Table V-A Blood Pressure (mmHg) | | | | |
|---------------------------------|-----------------|-----------------|-----------------|------------------|
| | Day 1 Session 1 | Day 1 Session 2 | Day 7 Session 3 | Day 14 Session 4 |
| Participant 1 | 128/84 | 103/73 | 125/81 | 119/89 |
| Participant 2 | 145/95 | 149/101 | 140/90 | 139/91 |
| Participant 3 | 134/78 | 125/71 | 140/82 | 119/71 |
| Participant 4 | 144/90 | 137/81 | 134/80 | 133/89 |

Table V-B Resting Systolic Blood Pressure (mmHg)



Graphical & Statistical Research Results

Table V-D Saturation Pulse Oxygen (SpO2%)



Graphical & Statistical Research Results

Table V-E Resting Heart Rate (BPM)

| | Day 1 Session 1 | Day 1 Session 2 | Day 7 Session 3 | Day 14 Session 4 |
|---------------|-----------------|-----------------|-----------------|------------------|
| Participant 1 | 87 | 80 | 82 | 63 |
| Participant 2 | 77 | 57 | 68 | 59 |
| Participant 3 | 90 | 64 | 79 | 77 |
| Participant 4 | 83 | 71 | 78 | 70 |



Graphical & Statistical Research Results

Root Mean Squared Successive Difference (NN Intervals)
Table V-F Heart Rate Variability (RMSSD)



Data: Selected Photos Comparison; Participant 3

Table IV-1 Participant 3 Movement and Separation Comparison

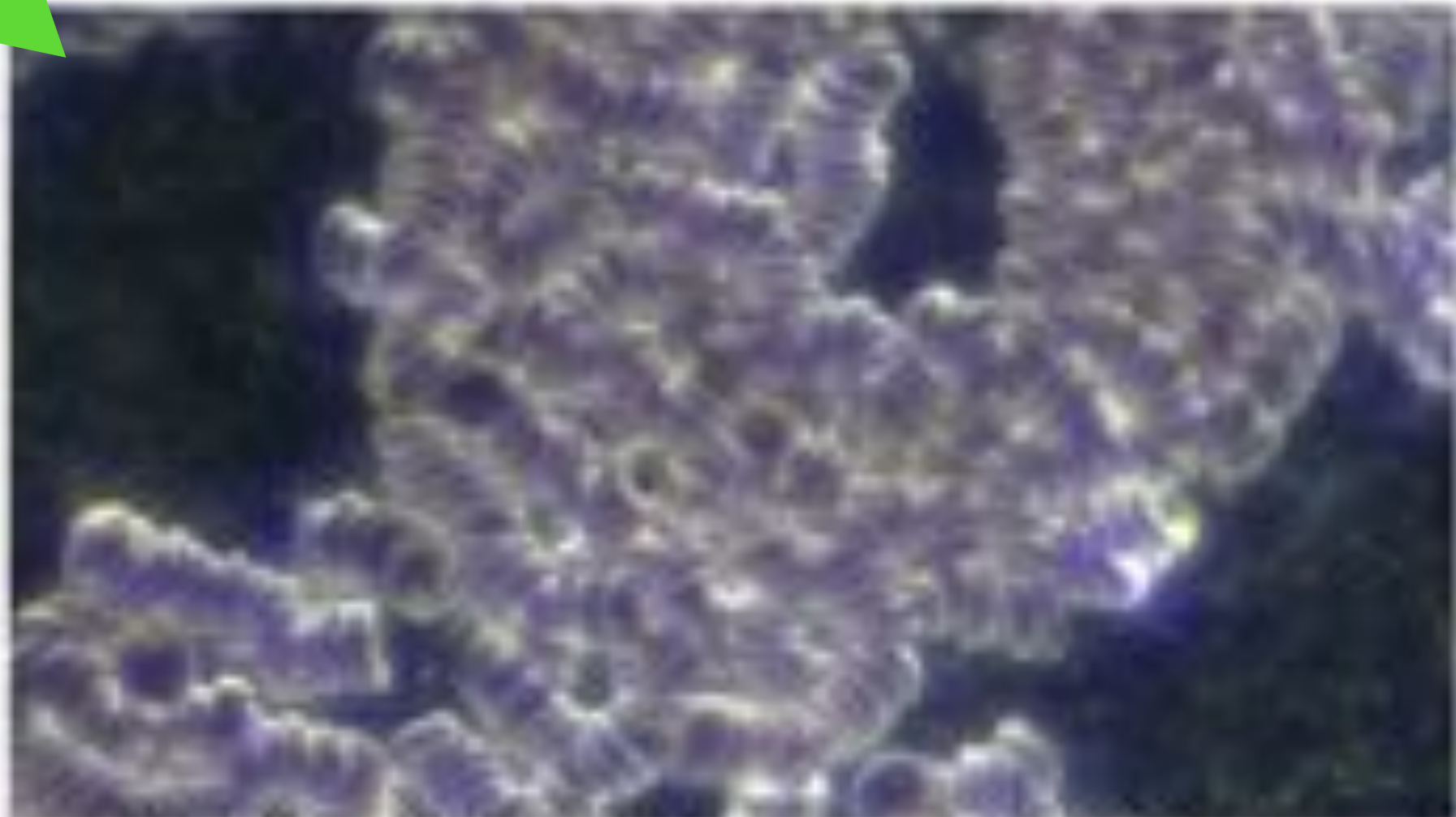


Figure 125 Day 1 Session 1 0 Joules Given

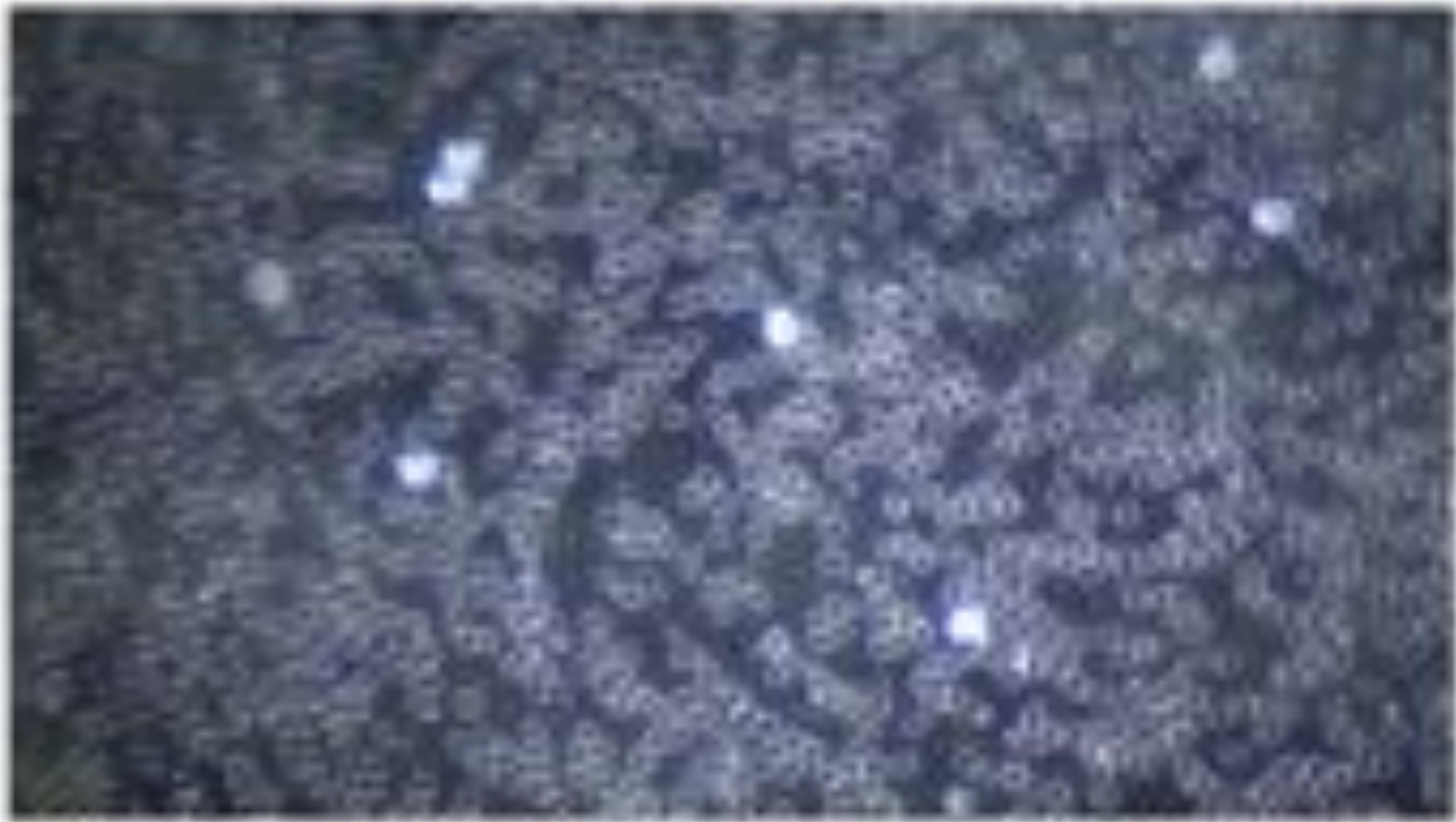


Figure 127 Day 1 Session 2 1531 Joules Given

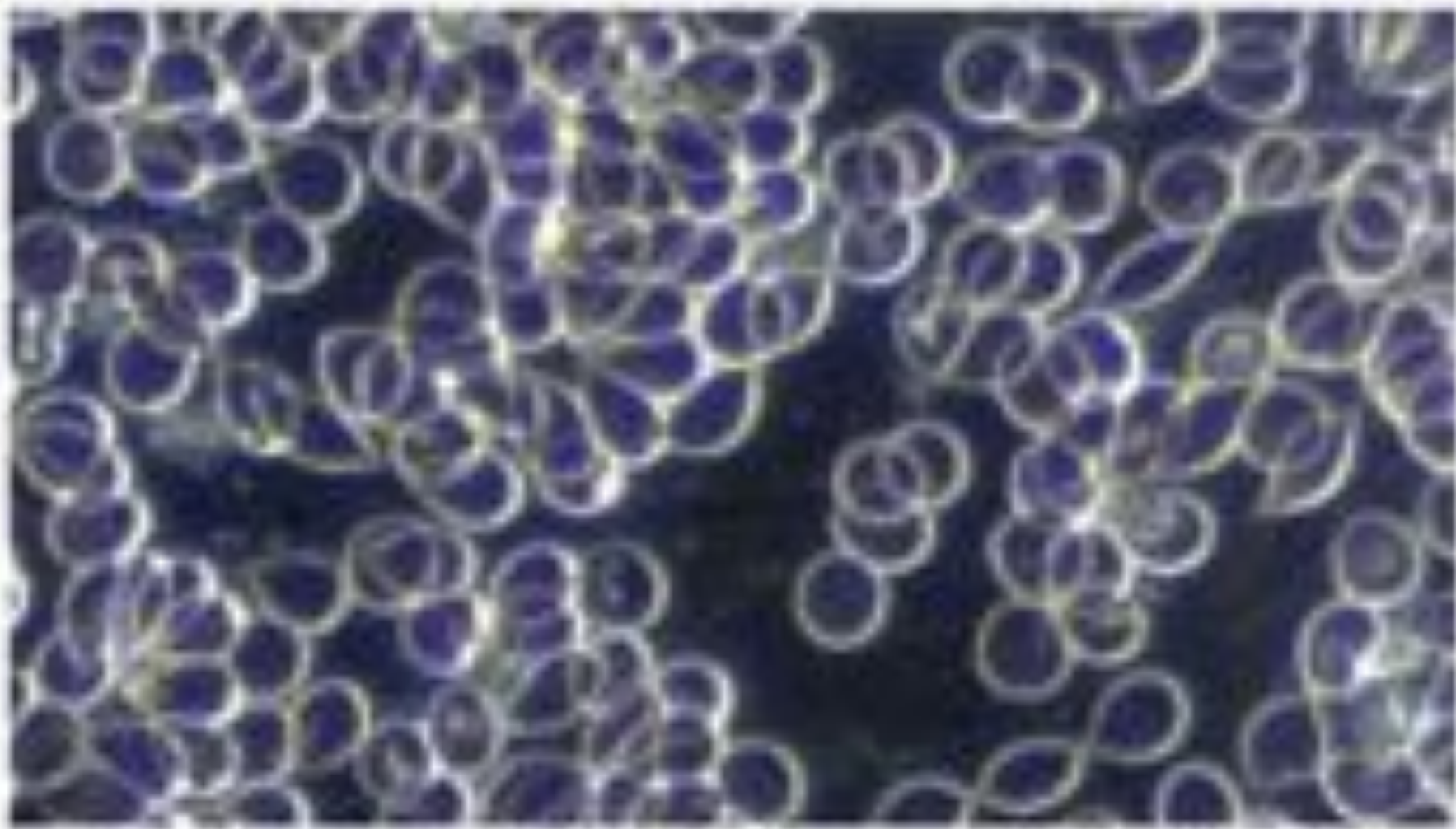


Figure 130 Day 7 Session 3 11,108 Joules Given

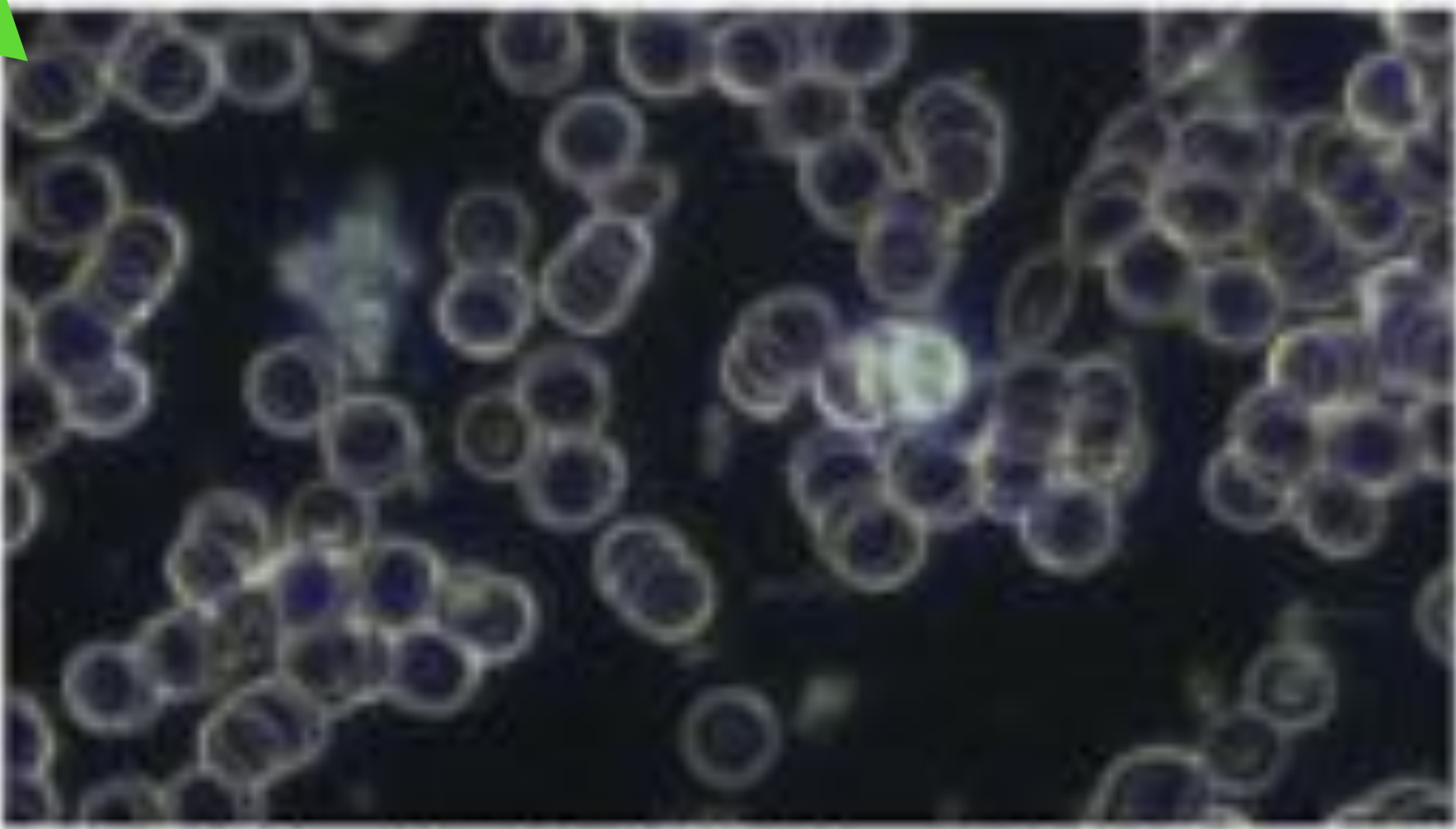


Figure 133 Day 14 Session 4 0 Joules Given

Data: Selected Photos Comparison; Participant 1



Table IV-C Participant 1 White Blood Cell Health and Activity Comparison

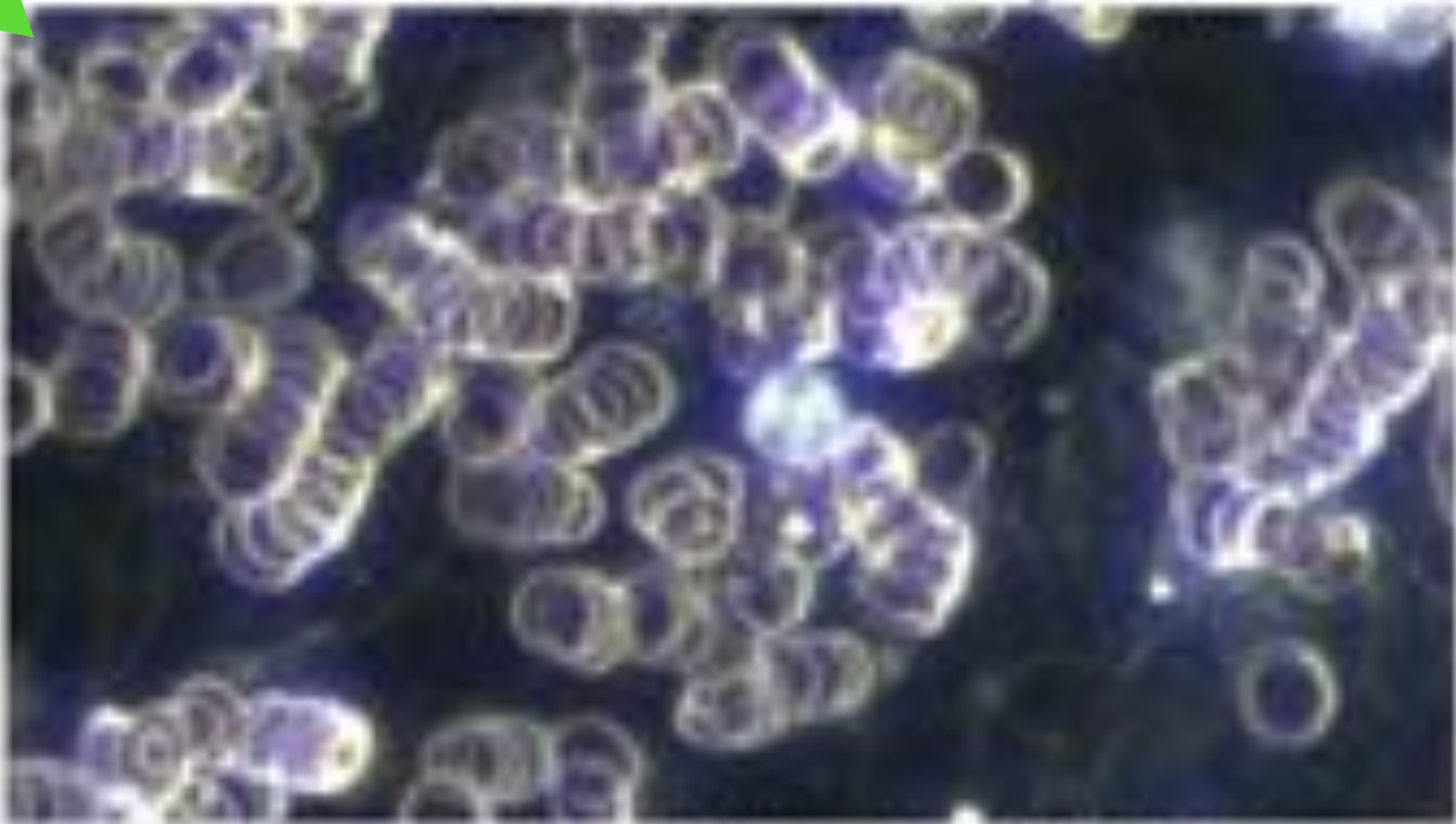


Figure 14 Day 1 Session 1 0 Joules Given

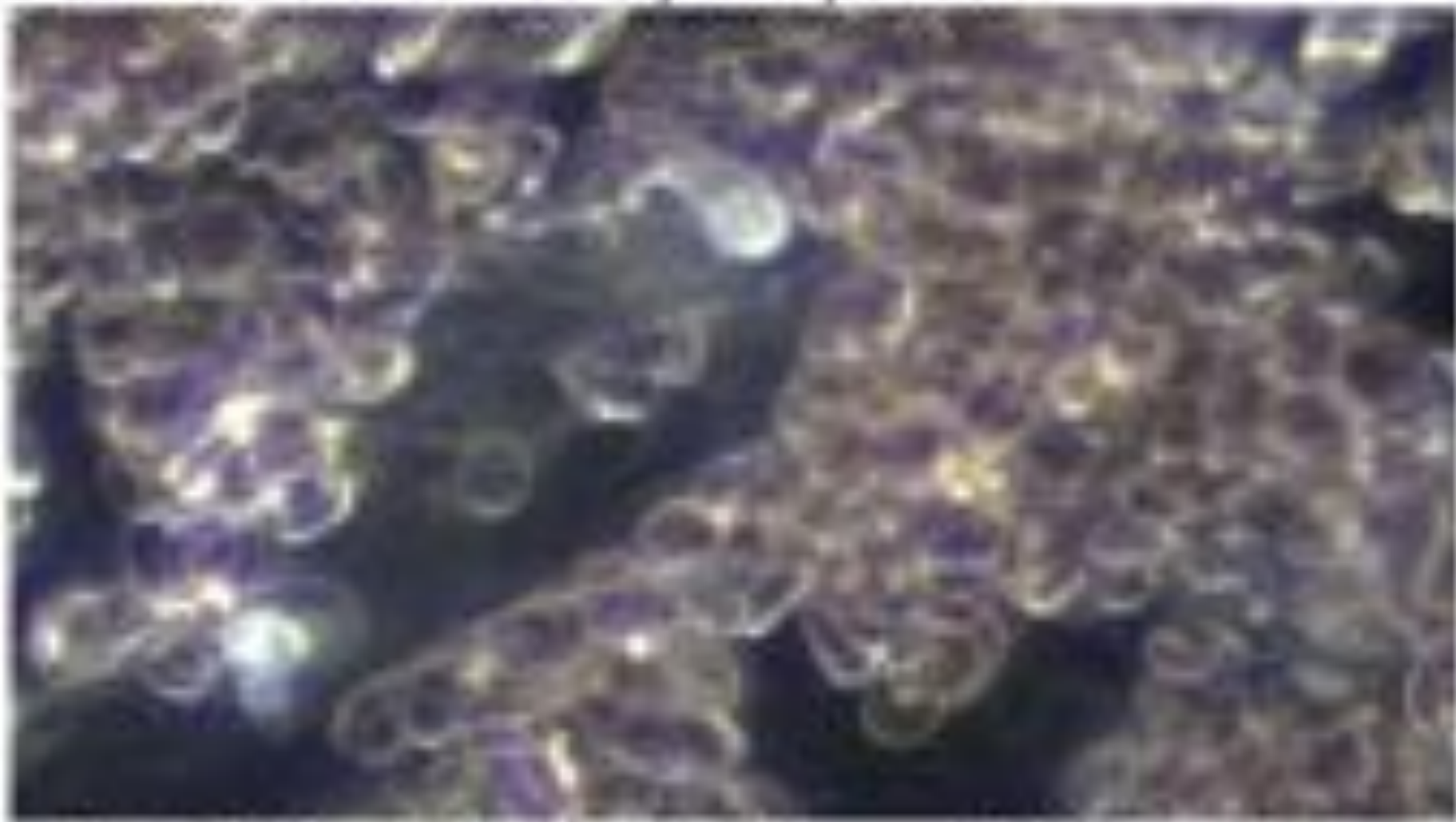


Figure 15 Day 1 Session 2 1002 Joules Given

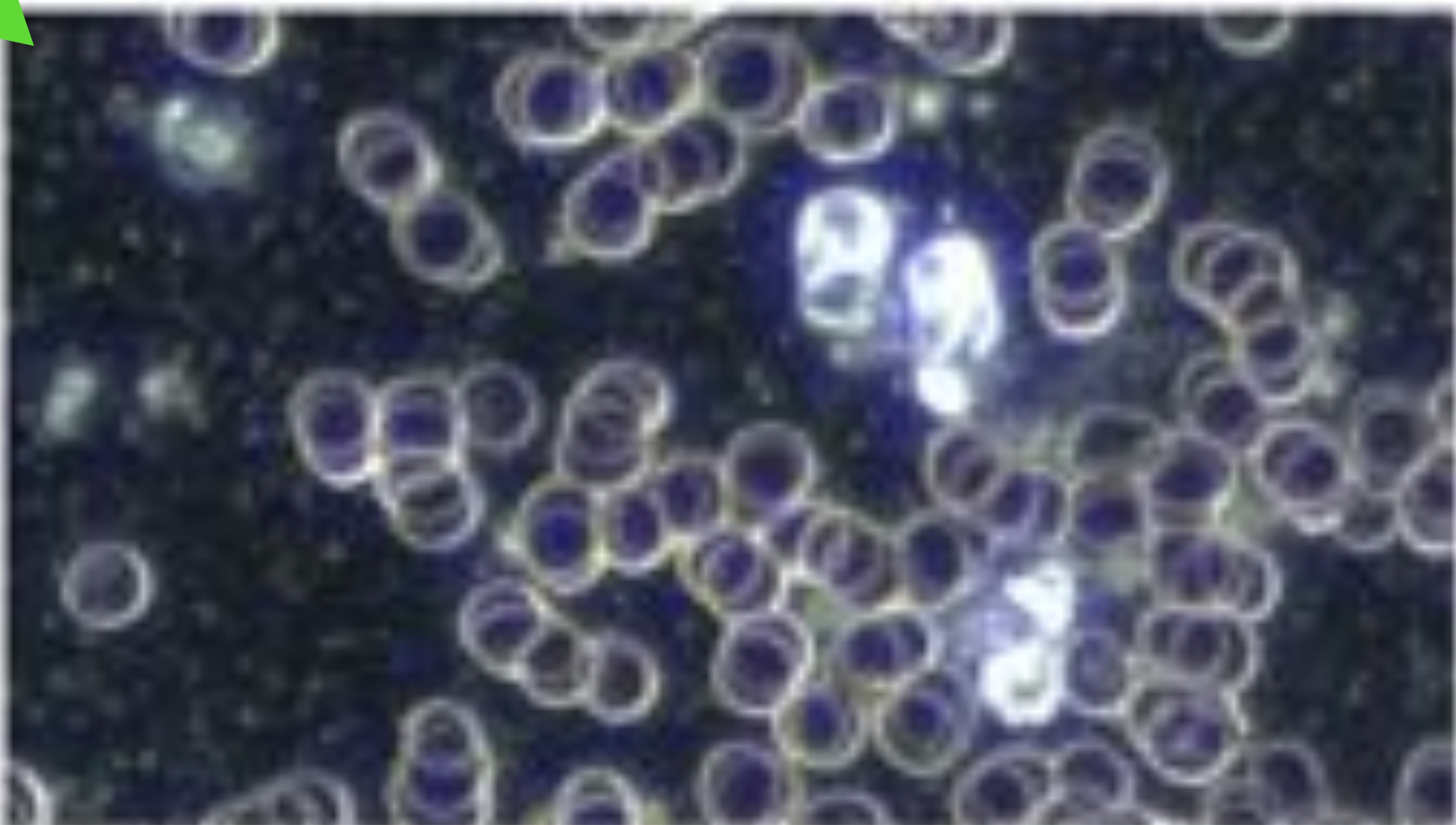


Figure 16 Day 7 Session 3 11,414 Joules Given

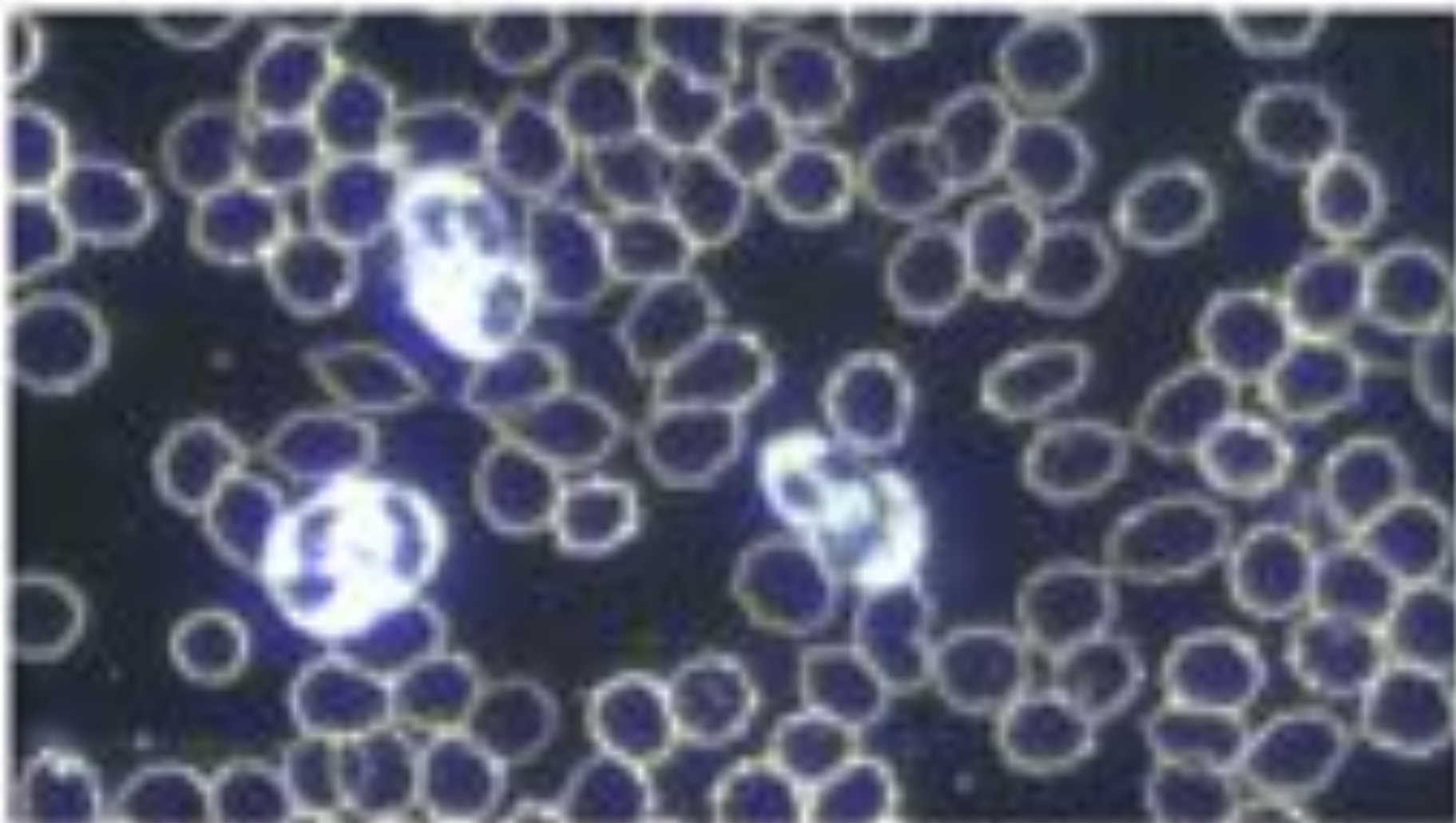


Figure 20 Day 14 Session 4 0 Joules Given

Other Devices vs the EAM Special Edition



EAM Special Edition vs. ITO ES-130



EAM Special Edition vs. ITO ES-130



| Pointoselect Digital | | |
|----------------------|--------|---------|
| Frequency | Result | % Error |
| 2.3 | 2.30 | 0.00% |
| 4.6 | 4.60 | 0.00% |
| 9.1 | 9.10 | 0.00% |
| 18.3 | 18.29 | 0.0005% |
| 36.5 | 36.46 | 0.001% |
| 73 | 72.83 | 0.002% |
| 146 | 145.29 | 0.004% |

| ITO ES-130 | | |
|------------|--------|---------|
| Frequency | Result | % Error |
| 1 | 0.95 | 5.00% |
| 1.3 | 0.98 | 24.62% |
| 1.5 | 1.37 | 8.67% |
| 2.5 | 2.39 | 4.40% |
| 5.5 | 9.38 | -70.55% |
| 20 | 21.22 | -6.10% |
| 20 | 18.04 | 9.80% |
| 23 | 18.52 | 19.48% |
| 30 | 24.87 | 17.10% |
| 43 | 41.29 | 3.98% |
| 80 | 101.55 | -26.94% |
| 150 | 143.87 | 4.09% |
| 150 | 136.81 | 8.79% |
| 170 | 139.64 | 17.86% |
| 210 | 176.79 | 15.81% |
| 270 | 261 | 3.33% |
| 380 | 428.9 | -12.87% |
| 500 | 502.8 | -0.56% |



EAM Special Edition vs. ITO ES-130



| Pointoselect Digital | |
|-----------------------------|--------------------------------------|
| Voltage | 0-200V |
| Pre-programmed Frequencies | 28 Nogier, Bahr, Reininger |
| User Selectable Frequencies | 128 |
| Display | Digital |
| Point Detection | Dual Polarity (tonify and Sedate) |
| Stim Polarity | Bi-polar (automatic detection) |

| ITO ES-130 | |
|-----------------------------|--------------------------|
| Voltage | 0-20 (30) V |
| Pre-programmed Frequencies | None |
| User Selectable Frequencies | Infinite, but unknowable |
| Display | None |
| Point Detection | None |
| Stim Polarity | Single |



Frequently Asked Questions

Q: How is the EAM Pointoselect different from the blue Pointoselect Digital that Miridia Technology has been selling for years?

A: The devices are identical in every way (other than the color of the plastic), but the white, EAM Special Edition version of the Pointoselect Digital includes an additional handset, which we call the Needle Stimulator Lead Set.

The EAM Special Edition Pointoselect Digital also comes with special training from Dr. Steiner and Dr. Larsen that will help you use the device to its fullest potential in your treatments.

Q: Why is the EAM Special Edition white, while the other Miridia Technology Pointoselect Digital is blue?

A: We wanted to set the EAM Special Edition Pointoselect Digital apart to avoid confusion. The color of the plastic makes absolutely no difference in functionality—it is purely a cosmetic difference.

Q: If I don't follow the EAM system, is the new Needle Stimulator Lead Set still useful?

A: The EAM Special Edition Pointoselect Digital was specially designed by Dr. Steiner of Electroacupuncture Medicine and Dr. Larsen of Miridia Acupuncture Technology to meet all the specifications and needs for the electroacupuncture medicine method.

However, it could be useful for electroacupuncture in general, if you are interested in stimulating needles with electricity using a simple and portable handheld device.

Q: Why is this device so much more affordable than comparable electroacupuncture devices? Is the quality up to par?

A: Because we were able to build off an existing platform that's already FDA-cleared and in production (the Pointoselect Digital) to create the needle stimulator lead set for this device, we were able to keep costs low.

It was important to us to find or create a device that would be accessible and affordable for practitioners.

It's also important to note that every device is hand-tested by the Miridia Technology team to ensure that frequency, voltage, and functionality are accurate and correct.

Q: What will the online training include, and when will I receive it?

A: We will provide a complete digital library of EXCLUSIVE training videos to help you learn how to properly use the EAM Special Edition Pointoselect Digital.

You will be granted access to this library once your device(s) ship from the Miridia Technology warehouse. You'll be notified via email when your devices ship about how to access the online training.

Q: Can I use the EAM Special Edition Pointoselect Digital to locate points and perform auriculotherapy treatments?

A: Yes! The EAM Special Edition Pointoselect Digital will come with the original Pointoselect Digital probe, most often used for locating and treating auricular points.

Q: Can I order this device directly through EAM, or anyone else?

A: The EAM Special Edition Pointoselect Digital is only sold through Miridia Acupuncture Technology.

You can only place your order through our website or by calling our office at **208.846.8448.**

Your device(s) will ship from the Miridia Technology warehouse.

Q: Why is the EAM Special Edition Pointoselect Digital sold in pairs?

A: If you follow the EAM method for electroacupuncture, you will need 2 units PER treatment room, or per patient. If you have multiple treatment rooms, you'll need multiple pairs of 2.

As such, we made the units available in multiples, at a discount, as a service to our users.



**Yes, even
the Needle
Stimulator
Lead Set**

**All EAM Special Edition
Pointoselect Digital Products will
come with EXCLUSIVE Training
from Dr. Larsen & Dr. Steiner**





You'll receive access to the online training when your device(s) ship from the Miridia Technology warehouse



Your purchase includes a 60 day, money-back guarantee. The time window doesn't begin until we ship out your devices.

Need Help with your Order?

Phone: 208.846.8448 (Monday)

Email: help@miridiatech.com

Live Chat: www.pointoselect.com/eam/

*^^Link in the chat box; chat will be open for
1 hour after the conclusion of the webinar*